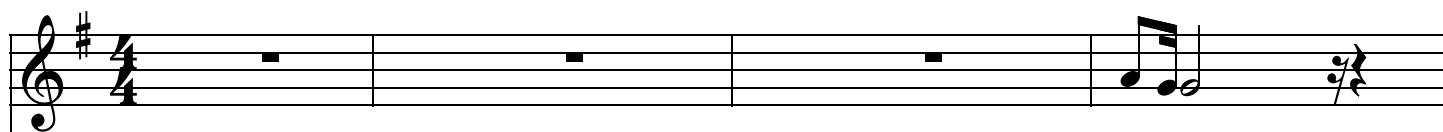


♩=95

G

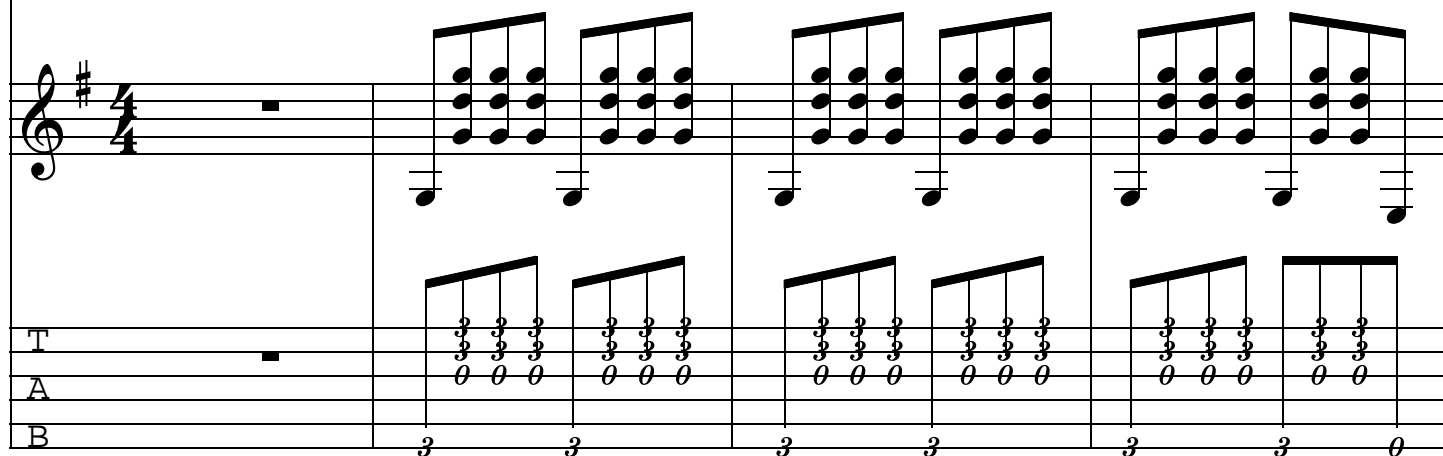
G

G



1音下げ

yesterday



F#m

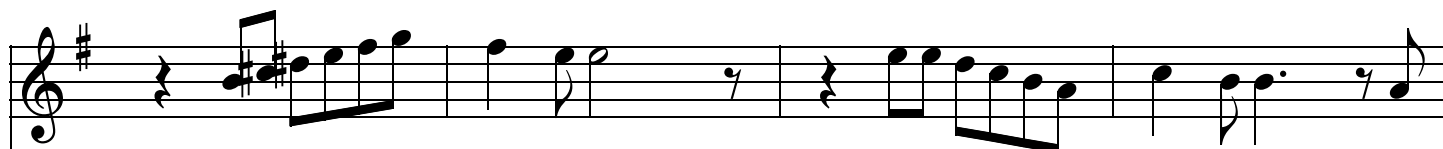
B7

Em

CM7

D7

G

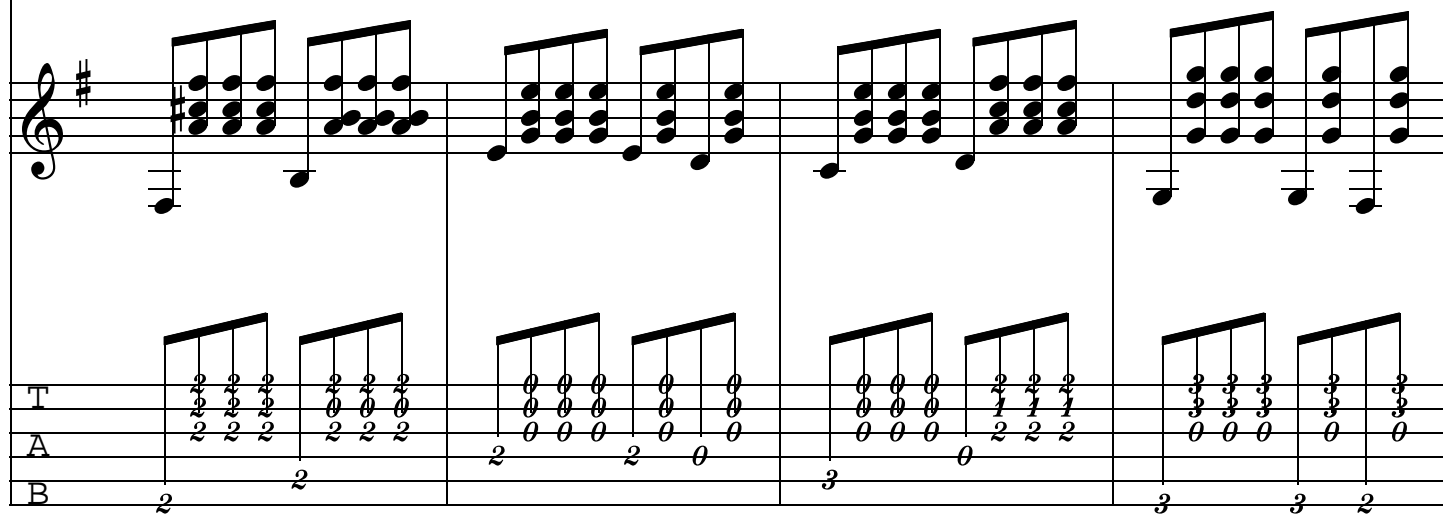


all my troubles seemed so far away

Now it looks as though they're

here to stay

oh



Em A C G G F#m B7

I believe in yesterday Suddenly I'm not half the man I

T
A
B

Em CM7 D7 G Em A

used to be there's a shadow hanging over me Oh yesterday came

The image displays a musical score for the song 'The Sound of Silence' by Simon & Garfunkel. It is organized into two systems. The first system contains a vocal melody line in treble clef with a key signature of one sharp (F#) and a 4/4 time signature. The melody is: G4 (quarter), A4 (quarter), B4 (half), C5 (quarter), B4 (quarter), A4 (quarter), G4 (half). The lyrics 'used to be there's a shadow hanging over me Oh yesterday came' are aligned under the notes. Above the staff, the chords Em, CM7, D7, G, Em, and A are indicated. The second system contains a piano accompaniment. It features a right-hand part with chords and a left-hand part with a bass line. The right-hand part consists of two measures of chords: G4-A4-B4-C5 and G4-A4-B4-C5. The left-hand part consists of two measures of chords: G4-A4-B4-C5 and G4-A4-B4-C5. The piano part is written in treble clef with a key signature of one sharp (F#) and a 4/4 time signature. The piano part consists of two measures of chords: G4-A4-B4-C5 and G4-A4-B4-C5. The piano part is written in treble clef with a key signature of one sharp (F#) and a 4/4 time signature. The piano part consists of two measures of chords: G4-A4-B4-C5 and G4-A4-B4-C5. The piano part is written in treble clef with a key signature of one sharp (F#) and a 4/4 time signature. The piano part consists of two measures of chords: G4-A4-B4-C5 and G4-A4-B4-C5.

C G F#m B7 Am D7

suddenly Why shie had to go I don't know she wouldn't

This system contains the first four measures of the song. The vocal line is in treble clef with a key signature of one sharp (F#). The lyrics are: 'suddenly Why shie had to go I don't know she wouldn't'. The guitar accompaniment is shown in standard notation on a six-string guitar, with fret numbers indicated below the strings. The bass line is also shown with fret numbers. The system ends with a double bar line.

G F#m B7 Am D7

say || said something wrong Now I long for yesterday

This system contains the next four measures of the song. The vocal line continues with the lyrics: 'say || said something wrong Now I long for yesterday'. The guitar accompaniment continues with the same fret numbers. The system ends with a double bar line.

The image displays a musical score for the song "Yesterday" by The Beatles. It is a 12-measure piece in the key of D major (indicated by two sharps, F# and C#) and 4/4 time. The score is written for guitar and bass.

Guitar Part: The guitar part is written on a single staff. It begins with a D major chord (D, F#, A) and a half note. The melody consists of the notes D, E, F#, G, A, B, C#, and D, which are the notes of the D major scale. The melody is played in a descending sequence: D (half note), E (quarter note), F# (quarter note), G (quarter note), A (quarter note), B (quarter note), C# (quarter note), and D (half note).

Bass Part: The bass part is written on a single staff. It begins with a D major chord (D, F#, A) and a half note. The bass line consists of the notes D, E, F#, G, A, B, C#, and D, which are the notes of the D major scale. The bass line is played in a descending sequence: D (half note), E (quarter note), F# (quarter note), G (quarter note), A (quarter note), B (quarter note), C# (quarter note), and D (half note).

Lyrics: The lyrics are "yesterday", "love was such an easy", and "game to play".

CM7 D7 G Em A C G

Now I need a place to hide away oh I believe in yesterday

T
A
B

F#m B7 Am D7 G

why she had to go I don't know wouldn't say

T
A
B

F#m B7 Am D G

I said something wrong now I long for yesterday

T
A
B

G F#m B7 Em CM7 D7

yesterday love was such an easy game to play Now I need a place to

T
A
B

G Em A C G G

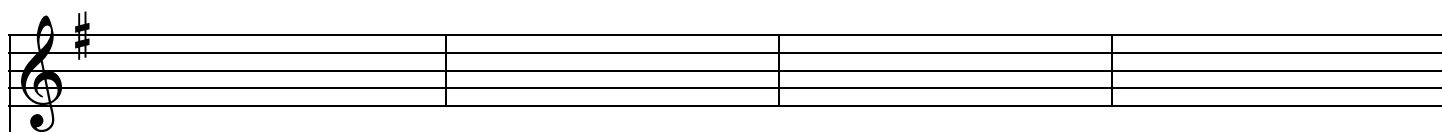
hide away oh I believe in yesterday mm

T
A
B

G



T	3	3	3	
A	0	0	0	
B				



T				
A				
B				